

Chapter 7

MULTIPLE CHOICE QUESTIONS

1. a
2. a
3. b
4. d
5. b
6. b

VERY SHORT ANSWER QUESTIONS

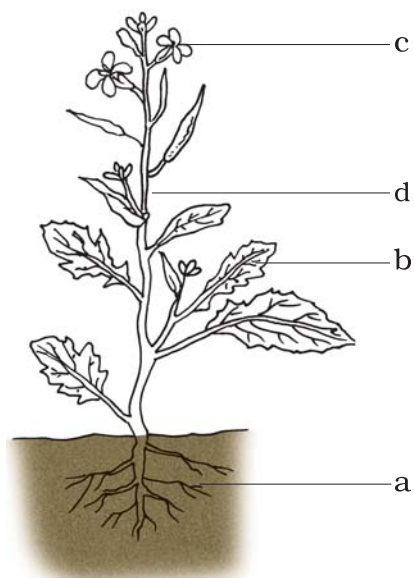
7. a– sepals; b– ovary, ovules; c– filament, anther; d– bud
8. (a) Herb or name of any small plant.
(b) Root; absorption of water and minerals.

SHORT ANSWER QUESTIONS

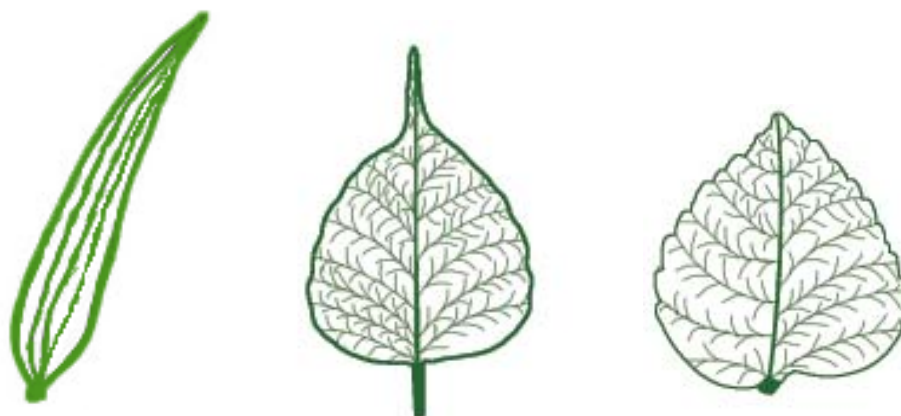
9. a– (iii); b– (ii); c– (iv); d– (v)
10. He did not boil the leaf in spirit to remove the chlorophyll.
11. No, all the starch stored in the leaf would have been used up by the plant. No starch would be synthesised afresh due to non-availability of sunlight.
12. **Hint:** Yes, water and minerals move upwards and food moves downwards.

LONG ANSWER QUESTIONS

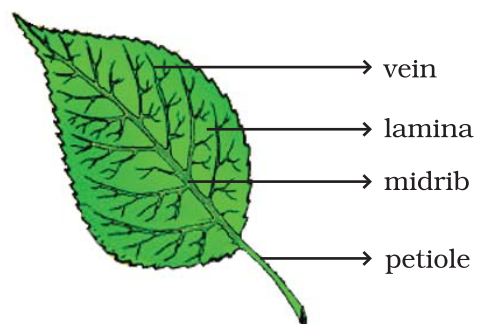
13. a– root; b– leaf; c– flower; d– stem



14.



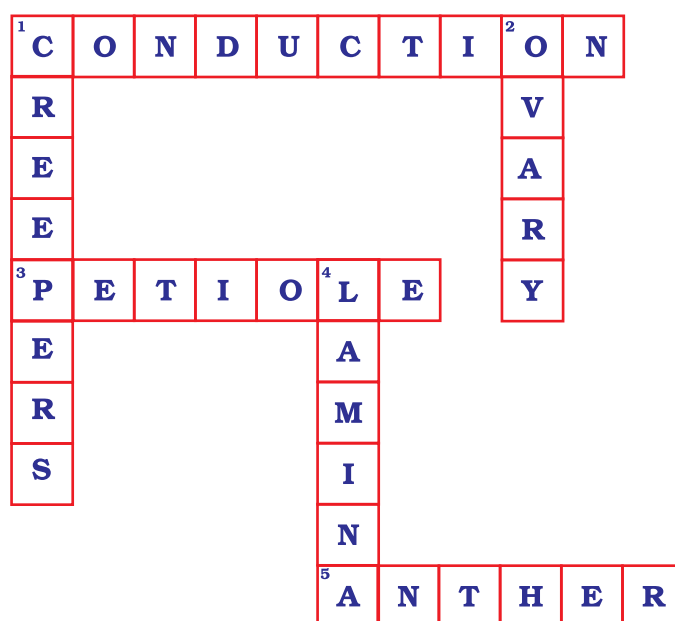
15. (a)



(b) Reticulate venation

(c) Parallel venation

16. (a) Transpiration.
 (b) On a bright sunny day.
 (c) Small drops of water inside the polythene cover.
 (d) The set-up must be airtight/polythene bag must be dry/
 the twig must be fresh with 10-12 leaves.
17. (a) Wrong– Anther is a part of the stamen.
 (b) Wrong– The visible parts of a bud are the sepals.
 (c) Correct.
 (d) Wrong– Leaves also perform photosynthesis.
- 18.



19. (a)– sepals; (b)– petals; (c)– pistil; (d)– filament; (e)– anther;
 (f)– male; (g)– pistil; (h)– ovary; (i)– ovules